

## Black Liquor Filter

|                        |                                   |
|------------------------|-----------------------------------|
| REGION:                | Belgium                           |
| MACHINE:               | Malone Black Liquor Filter (drum) |
| POSITION:              | Facing                            |
| GRADE:                 | Softwood (pine)                   |
| SPEED OF INSTALLATION: | From 2 days to 2 hours!           |
| DESIGN:                | K-Steel™                          |

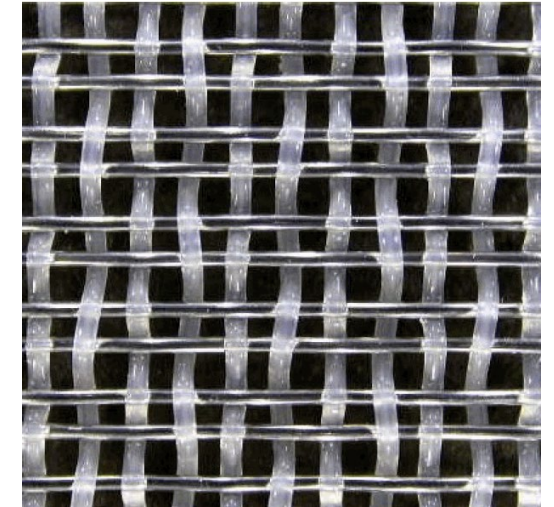
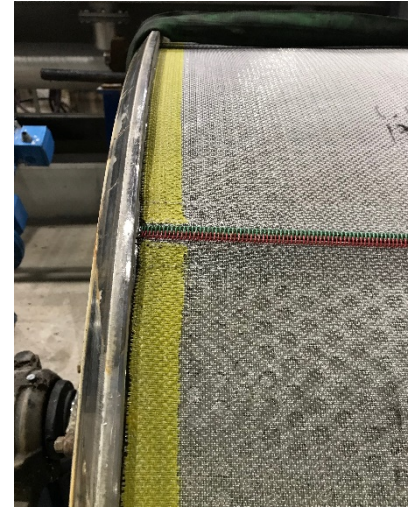
### OBJECTIVES:

Replace the standard single layer 13 Mesh / cm (33 mesh /inch) metal design by a shrinkable product in order to improve safety and reduce down time

### RESULTS:

- Installation went down from 2 days to 2 hours
- No more specialized welders required
- No more harmful soldering fumes
- Better filtration performance

## K-Steel™ - Easier and Safer Installation



### VALUE

The K-Steel™ half metal / half kynar® shrinkable product can be installed quicker than a welded metal fabric and in a much safer way because of there are no fumes from soldering. Furthermore the fabric can be installed by production operators leaving specialized mechanics to do other tasks during the shutdown