

SmoothTec™



The SmoothTec™ press felt provides the ultimate in micro scale pressing uniformity for today's papermakers in need of improving sheet smoothness and sheet solids. This new product incorporates the latest in resin technology and needling processes to provide a felt surface that is free of needle tracks and surface patterns. The resin enhancement creates a cross-linking network between the batt fibers to increase pressing uniformity without closing down the drainage channels. Unlike traditional surface treatments of the past that were topical and wore out quickly, SmoothTec™ resin permeates into the batt structure to create a durable surface that maintains pressing uniformity over the life of the felt.

Features & Benefits

- Increased pressing uniformity and fiber support
 - Improved micro smoothness
 - Increased sheet solids
 - High dewatering rates right from startup
- Resin permeates through the fine cap batt structure
 - Steady-state performance
 - Increased durability

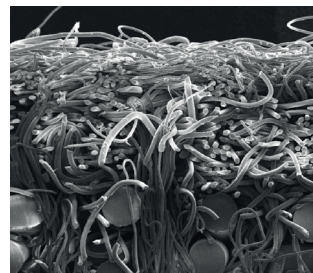
SmoothTec™ can be built on any of our Advanced Structures Platforms which provide excellent Macro scale pressing uniformity:

- AccuFlow™
- FlexFlow™ 2
- AXiom™
- element™
- Stylus™
- Seam or Endless constructions

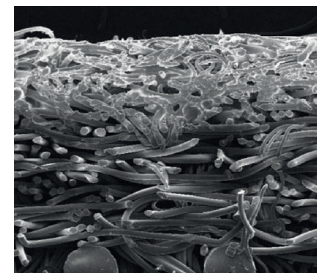
SmoothTec™ can be used with any fine cap batt from 3 to 20 denier.

Application guidelines:

- Bleach Board
- Coated and Uncoated FreeSheet
- Coated and Uncoated Groundwood
- White Top / Coated Linerboard
- Any felt contacting critical finish side of sheet



Standard Press Felt



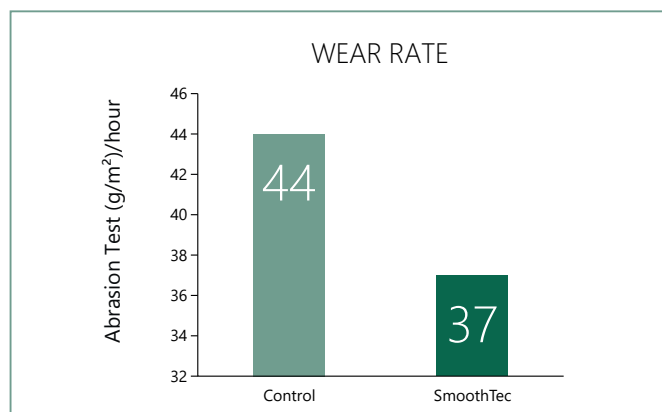
SmoothTec



Standard Surface



SmoothTec



AstenJohnson Press Fabrics

400 Asten Road • Clinton, South Carolina • USA 29325
 Phone: +1 864 833 3800 • Fax: +1 864 833 6657

www.astenjohnson.com

