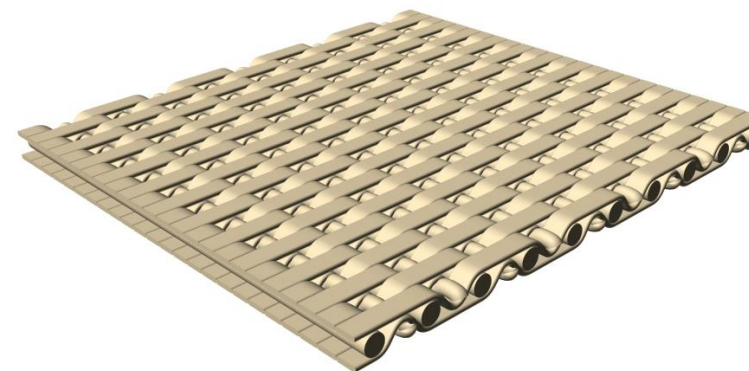


DRYER – Distortion Resistance

REGION:	North America
MACHINE:	PM1
POSITION:	4th Top
GRADE:	Uncoated Freesheet
BASIS WEIGHT:	42 lb (62 gsm)
SPEED:	3,800 fpm (1,158 mpm)



OBJECTIVES:

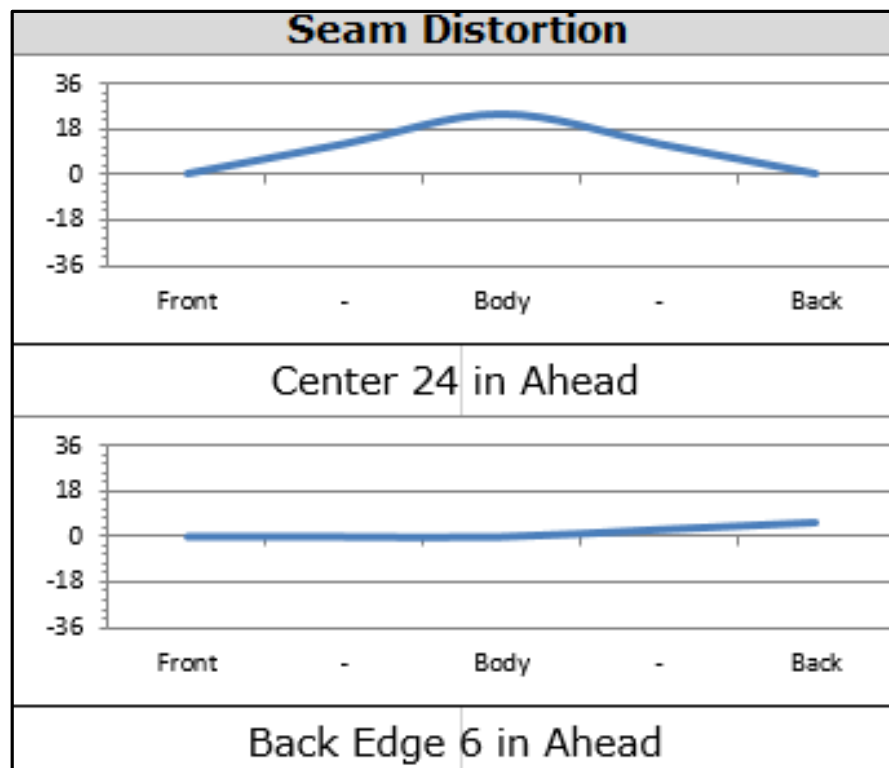
Prevent dryer fabric narrowing and control air turbulence at the section transfer.

BACKGROUND:

- Conventional woven designs would narrow 10 to 12 inches (25.4 to 30.4 cm) due to a 24-36 inch center bow (70-91 cm). This led to poor sheet coverage and edge flutter.

RESULTS/VALUE

UltraClean®, with its stiffer, more stable CD structure, would not center bow and thus did not narrow. This led to more stable sheet handling and easier sheet threading.



- Conventional Design:
- seam distortion 24"
 - narrowed 12"

- UltraTemp™:
- seam distortion 4"
 - narrowed 0"